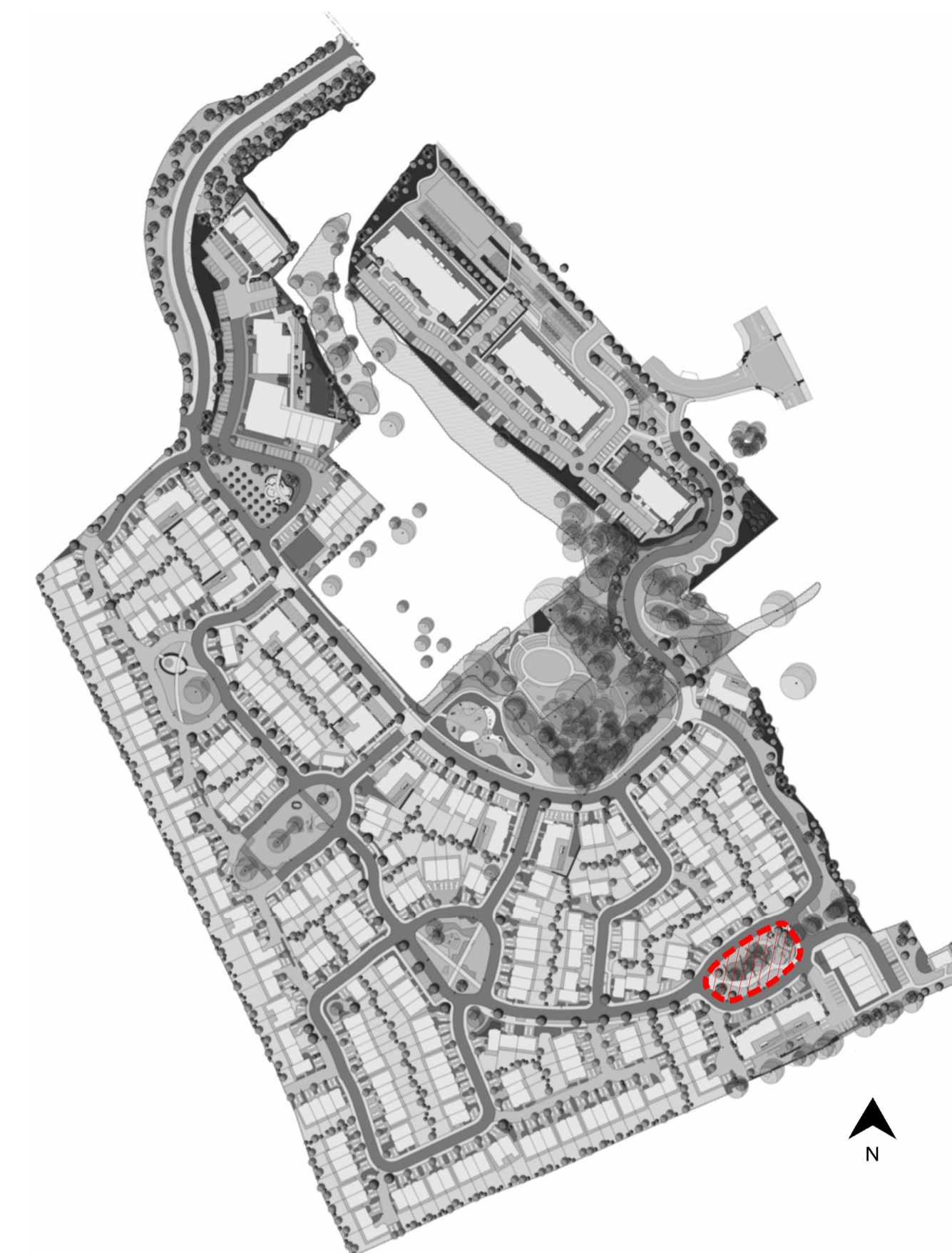




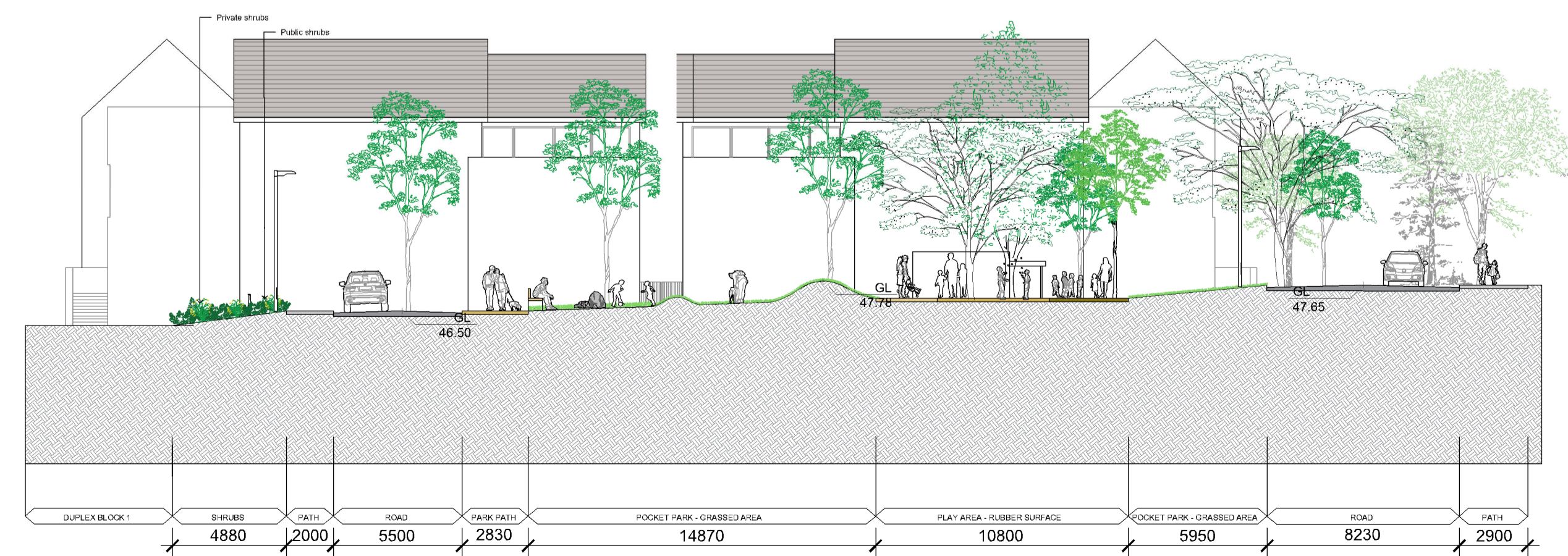
- LEGEND:
NOTE: for details of materials & planting see drawing 18221-2-103
- GENERAL**
- Existing Trees/Group of Trees
 - Proposed Building
- PROPOSED PLANTING AND HABITATS**
- Parkland Trees
 - Street Trees
 - Small to Medium Garden Trees
 - Orchard Trees
 - Birch Thickets
 - Amenity / Private Grass
 - Low / Medium height shrub Planting
 - Hedge
 - Mixed Native Woodland Planting
 - Ornamental Grasses + Planting
 - Bulb Planting / Long grass
 - Landform
 - Swale
- PROPOSED HARD ELEMENTS**
- Tarmac Road
 - Concrete Footpath
 - Raised Table
- Tactile Paving
 - Rolled Dust/Gravel Path
 - PCC Pavers for Vehicular/Pedestrian
 - Shared surface-Coloured tarmac
 - Cycle way
 - Parking Bay and Threshold Paving
 - PCC sets
 - Attenuation area
 - 1.2m high vertical bar railing
- PROPOSED PLAY AREAS**
- Rubber / Woodchip Play surface
 - Sand area in Playground
 - Boardwalk Play Features
 - Balance Beams
 - Informal Play: Boulders, Mounds, Logs
 - Play Equipment
 - Fitness Trail Equipment
- PROPOSED FURNITURE & STRUCTURES**
- Coursed gabion retaining walls
 - 1. Bike Stands
 - 2. Bin Shed
 - 3. Bins
 - Indicative location of substation unit
 - Street Lighting
 - Pumping station
 - 1. Timber Bench
 - 2. Concrete Wall/Seat



KEY PLAN NTS

SOUTH PARK, PLAN VIEW
SC. 1:200

South Park
Existing trees are incorporated into a contemporary but informal pocket park. Balance boardwalks provide immersive play experiences and connect to benches sited to make the most of valley views. Simple play features made from mounds, boulders and logs are proposed, while wide pathways opposite road junctions invite people in.



SOUTH PARK SECTION
SC. 1:200



BOYNE VIEW GARDENS, INDICATIVE IMAGES

NOTE:
- DRAWING ISSUED FOR PLANNING PURPOSE ONLY.
LANDSCAPE IS SUBJECT TO APPROVAL OF THE PLANNING AUTHORITY

REV	DATE	AMENDMENT
A	14/11/2019	PLANNING ISSUE

CUNNANE STRATTON REYNOLDS
LAND PLANNING & DESIGN

DUBLIN OFFICE
3 MOLESWORTH PLACE DUBLIN 2
TEL 01 661 0419 FAX 01 661 0431
EMAIL info@csrlandplan.ie



PROJECT: BELMOUNT RESIDENTIAL DEVELOPMENT ACADEMY STREET, NAVAN, CO MEATH	DATE: October 2019
DRAWING: LANDSCAPE MASTERPLAN DETAIL: SOUTH PARK	SCALE: 1/200@A1
	DRAWN: DC
	CHECKED: EO
	DRAWING NO: 18221-2-403